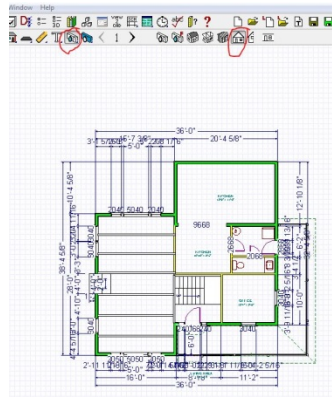


To get photos from Chief Architect to Word:

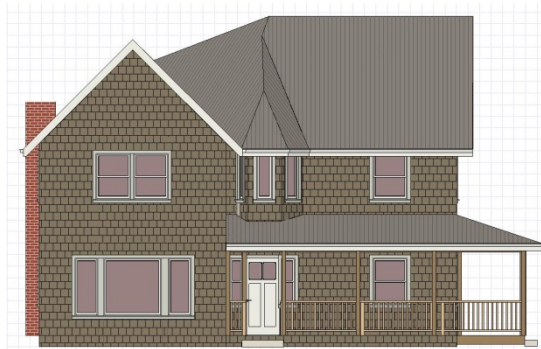
Step one:

Use the color camera

To get the view you want.



Step 2: Use the snip tool by going to the start menu; type in ship and select snipping tool. Then pick the picture you want by defining the selection window and save as a jpeg so you can retrieve the image.



Open Word. Insert picture from file. When the photo comes in, right click on the photo. Choose "Word Wrap", and "Behind Text". Now you can control how you arrange things on the page. Include labels where appropriate.

